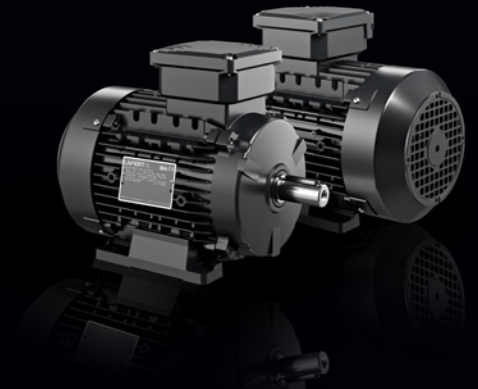
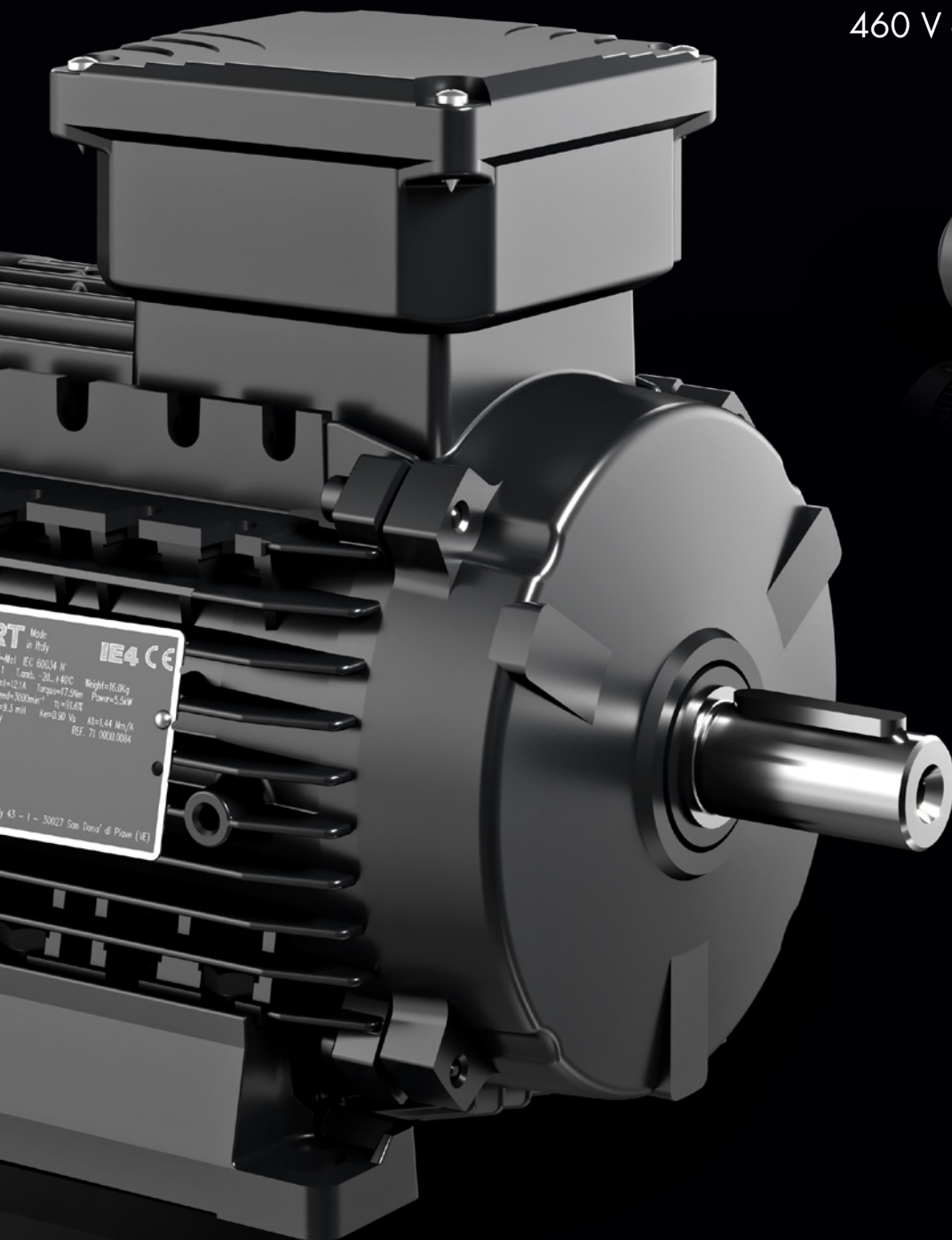


SUPER PREMIUM EFFICIENCY MOTORS

THREE-PHASE MOTORS
0.75 TO 15 KW
460 V - 60 HZ | 575 V - 60 HZ



SPECIAL APPLICATIONS

The quality of Lafert motors is generated by the constant search for innovative solutions and from our natural propensity for customization and co-engineering. Lafert specializes in designing and manufacturing customized electric motors, created to meet the needs of each customer. **More than 90% of Lafert products are non-standard motors.**

Thanks to our strong approach to the market, experience in special applications and the wide range of solutions, we can offer an electric and mechanical design perfect for every application need. **The co-designing approach from our engineers** and the skillful expertise of our technical office to

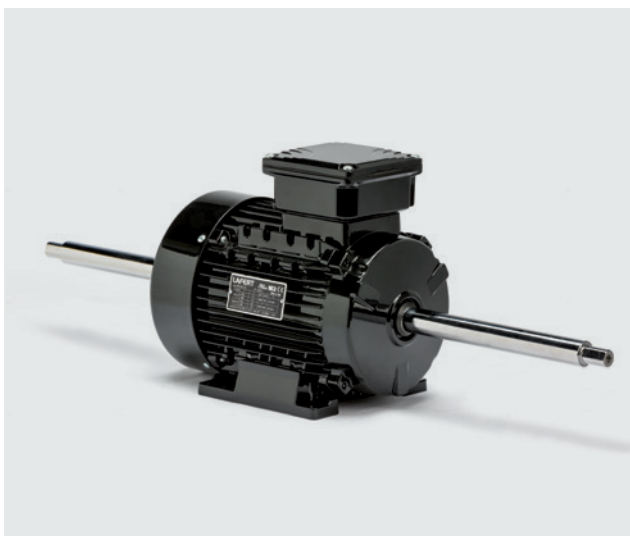
adapt the motor to specific market segments allows us to offer an exceptionally high level of customization, efficiency and reliability.

To ensure the maximum performance of our motors **we produce every component internally.** This allows us to tailor every element of our proposals by developing infinite solutions for all applications.

From flange design to special windings, from the degree of protection to the fan cooling, we customize everything to create the perfect motor that maximizes the performance and energy savings of the final application.

TARGET APPLICATIONS

<p>AIR PROCESSING</p> <p>COMPRESSORS, VACUUM PUMPS, BLOWERS</p>	<p>MAIN FEATURES</p> <ul style="list-style-type: none"> • Special flanges and shafts • Dedicated electrical design to deliver required performances • High reliability
<p>COOLERS</p> <p>AIR COOLED RADIATORS FOR HEAVY INDUSTRIAL APPLICATIONS</p>	<p>MAIN FEATURES</p> <ul style="list-style-type: none"> • High corrosion protection level (according to ISO 12944) • Special insulation system/voltage/frequency • Wide ambient temperature range • Without ventilation (IC418 – TEAO design) • Pad mounting design
<p>HVAC</p> <p>CENTRIFUGAL AND AXIAL FANS & PUMPS FOR INDUSTRIAL AND COMMERCIAL ENVIRONMENT</p>	<p>MAIN FEATURES</p> <ul style="list-style-type: none"> • Special shafts design • High corrosion protection level (according to ISO 12944) • Suitable for Variable Frequency Drive application • Pad mounting design
<p>WIND ENERGY</p> <p>MOTORS FOR YAW DRIVE & PITCH DRIVE, COOLING & VENTILATION, HYDRAULIC & POWER PACKS</p>	<p>MAIN FEATURES</p> <ul style="list-style-type: none"> • High reliability, low maintenance • High corrosion protection level (according to ISO 12944) • Special insulation system/voltage/frequency



SUPER PREMIUM EFFICIENCY THREE-PHASE MOTORS - IE4

EFFICIENCY LEVEL ACCORDING TO EISA
EFFICIENCY TESTING METHOD CSA C390-10
VERIFIED BY UL UNDERWRITERS LABORATORIES INC.

EFFICIENCY LEVEL ACCORDING TO IEC 60034-30-1;2014
EFFICIENCY TESTING METHOD IEC 60034-2-1;2014

FOR MAINS VOLTAGE
460 V - 60 HZ
575 V - 60 HZ

NOMINAL FULL LOAD EFFICIENCY ACCORDING TO IE4 CODE @ 460V-60HZ
AND NEMA MG 1-TABELLA 12-12 (PREMIUM EFFICIENCY) @ 460-60HZ

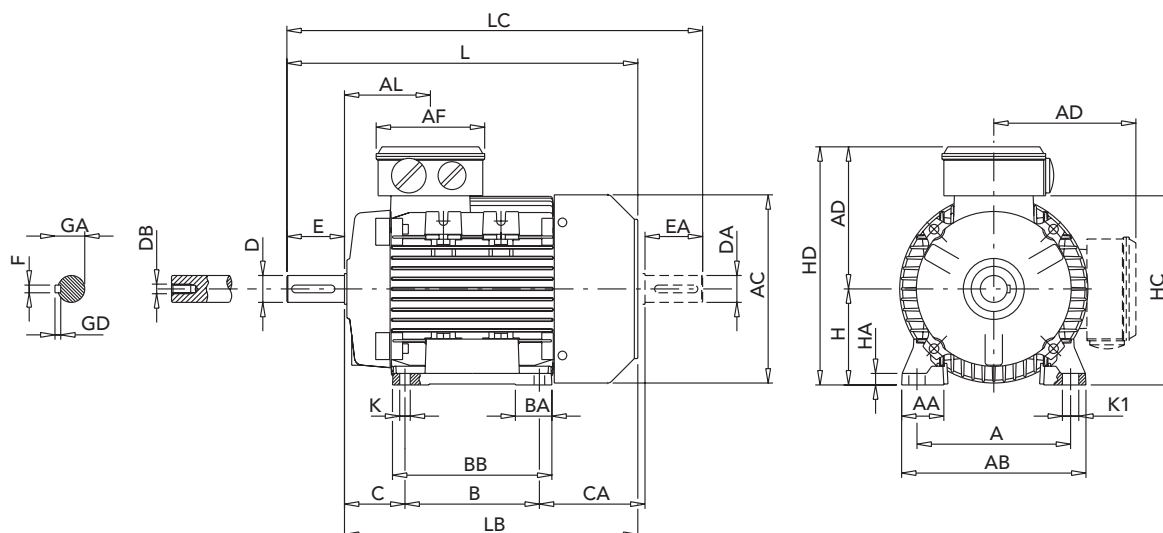


TEMPERATURE RISE TO CLASS B

Type	kW	HP	rpm	M _N Nm	η			cos φ	I _N 460 V	I _N 575 V	I _A /I _N	M _A /M _N	M _V /M _N	M _K /M _N	J 10 ⁻³ kgm ²	kg	
					50 %	75 %	100 %										
ALUMINIUM DESIGN																	
3000 rpm (2 poles)																	
AMQH 80Z AA	2	0.75	1	3505	2.1	78.8	82.1	82.5	0.77	1.5	1.2	10.5	6.0	5.1	6.1	0.7	9.5
AMQH 80Z BA	2	1.1	1.5	3490	3.0	82.3	85.2	85.5	0.72	2.2	1.8	10.3	5.5	5.3	5.8	0.9	11.1
AMQH 90S AA	2	1.5	2	3525	4.1	83.0	86.2	86.5	0.78	2.8	2.2	10.0	3.7	3.6	4.3	1.6	16.4
AMQH 90L BA	2	2.2	3	3525	6.0	86.9	88.8	88.5	0.77	4.0	3.2	11.1	5.8	5.2	6.1	2.0	18.0
AMQH 100L AA	2	3	4	3555	8.2	84.9	88.5	89.5	0.82	5.1	4.1	14.2	4.9	4.3	6.8	7.3	26.5
AMQH 112M AA	2	3.7	5	3555	10.0	85.4	89.0	89.5	0.81	6.5	5.2	12.2	4.8	4.2	5.2	8.6	33.6
AMQH 112M BA	2	4	5.5	3550	10.8	86.7	89.3	89.5	0.81	6.9	5.5	12.2	4.8	4.2	5.2	8.6	33.6
AMQH 132S AA	2	5.5	7.5	3570	14.8	83.6	87.4	90.2	0.85	9.1	7.3	16.3	5.8	4.9	7.9	17.5	58.0
AMQH 132S BA	2	7.5	10	3570	20.1	87.6	90.6	91.7	0.82	12.5	10.0	12.3	4.4	3.9	5.8	21.0	64.0
AMQH 132M CA	2	9.2	12.4	3560	24.7	90.0	91.9	91.7	0.84	14.7	11.8	9.7	4.1	3.4	4.2	28.0	68.0
AMQH 160M AA	2	9.2	12.4	3570	24.7	83.6	87.7	91.7	0.82	15.7	12.6	9.8	5.0	3.5	5.0	53.4	88.9
AMQH 160M BA	2	11	15	3560	29.5	88.5	91.3	92.4	0.84	17.7	14.2	9.8	5.0	3.5	5.0	53.4	88.9
AMQH 160M CA	2	15	20	3565	40.3	88.3	90.9	92.4	0.84	24.3	19.4	11.3	4.6	3.8	4.7	64.0	104.0
1500 rpm (4 poles)																	
AMQH 80Z AA4	4	0.75	1	1745	4.1	80.9	83.6	85.5	0.75	1.5	1.2	8.9	4.3	3.8	4.5	2.5	11.0
AMQH 90S AA4	4	0.75	1	1755	4.1	82.2	85.6	85.5	0.69	1.6	1.3	9.2	4.5	2.7	4.6	3.7	16.4
AMQH 90S BA4	4	1.1	1.5	1755	6.0	83.7	86.7	87.5	0.69	2.3	1.8	9.9	5.6	5.2	6.2	3.9	20.0
AMQH 100L AA4	4	1.1	1.5	1760	6.0	84.3	87.2	87.5	0.71	2.2	1.8	9.8	4.6	3.9	5.4	6.3	25.0
AMQH 100L BA4	4	1.5	2	1760	8.2	85.3	88.0	88.5	0.69	3.0	2.4	9.6	4.7	3.7	5.5	6.3	25.0
AMQH 100L CA4	4	2.2	3	1775	11.9	87.0	89.3	91.0	0.76	4.0	3.2	11.3	4.3	3.3	5.2	14.9	29.0
AMQH 112M AA4	4	2.2	3	1750	12.0	90.8	92.3	91.0	0.87	3.3	2.7	8.4	2.4	1.9	3.5	16.4	36.0
AMQH 112M BA4	4	3	4	1770	16.2	88.1	90.0	91.0	0.77	5.4	4.3	10.0	3.4	2.1	4.4	17.4	38.9
AMQH 112M CA4	4	3.7	5	1760	20.2	89.9	90.8	91.0	0.81	6.3	5.1	10.1	3.4	2.9	4.4	17.4	38.9
AMQH 132S AA4	4	4	5.5	1780	21.7	87.6	90.3	91.0	0.76	7.2	5.8	10.7	4.5	3.3	4.9	33.0	49.0
AMQH 132S BA4	4	5.5	7.5	1780	29.5	89.5	91.6	92.4	0.78	9.5	7.6	9.8	3.1	2.7	5.4	45.0	62.0
AMQH 132M CA4	4	7.5	10	1775	40.6	90.7	92.1	92.4	0.80	12.7	10.2	9.8	2.7	2.1	3.5	57.0	71.0
AMQH 160M AA4	4	9.2	12.4	1780	49.5	91.5	93.3	92.4	0.77	16.1	12.9	9.9	2.7	2.2	4.8	105.0	105.0
AMQH 160M BA4	4	11	15	1780	59.0	90.9	92.6	93.6	0.76	19.4	15.5	11.8	4.6	4.1	5.1	120.7	110.0
AMQH 160L CA4	4	15	20	1780	80.6	91.4	93.2	94.1	0.78	25.6	20.5	9.0	1.6	1.3	3.2	135.0	127.0



THREE-PHASE FRAME SIZE 80-160 IM B3 AMQH SERIES - ALUMINIUM ALLOY FRAME



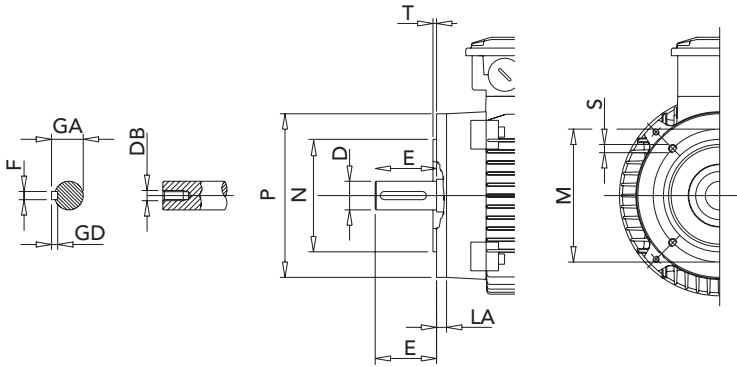
IEC	Poles	kW	H	A	B	C	K ¹⁾	AB	BB	CA	AD ²⁾	HD ²⁾	AC	HC
80	2 - 4	all	80	125	100	50	10	153	125	89	140	220	160	162
90S	2 - 4	all	90	140	100	56	10	170	150	116	149	239	180	181
90L	2	all	90	140	125	56	10	170	150	114	138	239	180	181
100L	2	all	100	160	140	63	11	192	166	110	156	256	196	198
	4	1.1-1.5	100	160	140	63	11	192	166	110	156	256	196	198
	4	2.2	100	160	140	63	11	192	166	110	156	256	198	192
112M	2	all	112	190	140	70	12.5	220	176	126	172	284	225	225
	4	2.2	112	190	140	70	12.5	220	176	126	172	284	225	225
	4	3-3.7	112	190	140	70	12,5	220	176	148	172	284	222	225
132S	2	5.5	132	216	140	89	12	256	180	184	196	328	248	261
	2	7.5	132	216	140	89	12	256	180	234	196	328	248	261
	4	4	132	216	140	89	12	256	180	154	196	328	248	261
	4	5.5	132	216	140	89	12	256	180	234	196	328	248	261
132M	2 - 4	all	132	216	178	89	12	256	218	216	196	328	248	261
160M	2 - 4	all	160	254	210	108	14	320	270	180	238	398	317	316
160L	4	15	160	254	254	108	14	320	310	206	238	398	317	316

IEC	Poles	kW	HA	K1	L	LB	LC	AL	AF	BA	AA	D/DA	E/EA	F	GD	GA	DB ³⁾
80	2 - 4	all	9.5	14	272	232	319	79	116	28.5	34.5	19	40	6	6	21,5	M6
90S	2 - 4	all	11	15	317	267	372	85	116	28/53	37	24	50	8	7	27	M8
90L	2	all	11	15	340	290	395	85	116	28/53	37	24	50	8	7	27	M8
100L	2	all	12	17	366	306	433	91	110	38	44	28	60	8	7	31	M10
	4	1.1-1.5	12	17	366	306	433	91	110	38	44	28	60	8	7	31	M10
	4	2.2	12	17	366	306	433	92	118	41	44	28	60	8	7	31	M10
112M	2	all	15	19	388	328	456	92	116	46	48	28	60	8	7	31	M10
	4	2.2	15	19	388	328	456	92	116	46	48	28	60	8	7	31	M10
	4	3-3.7	15	19	410	350	478	92	116	46	48	28	60	8	7	31	M10
132S	2	5.5	17	20	485	405	573	100	137	45	59	38	80	10	8	41	M12
	2	7.5	17	20	536	456	623	100	137	45	59	38	80	10	8	41	M12
	4	4	17	20	465	385	543	100	137	45	59	38	80	10	8	41	M12
	4	5.5	17	20	536	456	623	100	137	45	59	38	80	10	8	41	M12
132M	2 - 4	all	17	20	556	476	643	120	137	45	59	38	80	10	8	41	M12
160M	2 - 4	all	23	18	608	498	668	146	150	65	76	42/28	110/60	12/8	8/7	45/31	M16/M10
160L	4	15	23	18	678	568	738	168	150	65	76	42/28	110/60	12/8	8/7	45/31	M16/M10

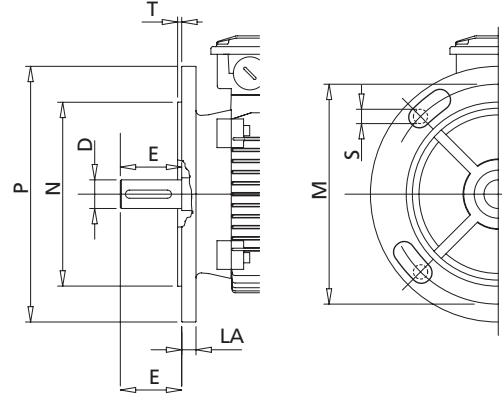
1) Clearance hole for screw 2) Maximum dimension 3) Centering holes in shaft extensions to DIN 332 part 2

THREE-PHASE FRAME SIZE 80-160 IM B5 - IM B14 AMQH SERIES - ALUMINIUM ALLOY FRAME

IM B14

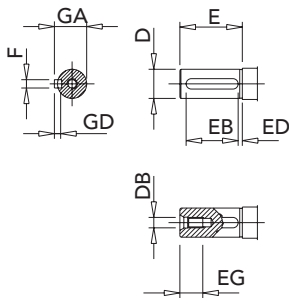


IM B5



IEC	FLANGE B14						OVERSIZED FLANGE B14 ²⁾						FLANGE B5					
	P	N	LA	M	T	S	P	N	LA	M	T	S	M	N	P	T	LA	S ¹⁾
80	120	80	9	100	3	M6	160	110	8.5	130	3.5	M8	165	130	200	3.5	10	M10
90	140	95	9	115	3	M8	160	110	9	130	3.5	M8	165	130	200	3.5	12	M10
100	160	110	10	130	3.5	M8	200	130	12	165	3.5	M10	215	180	250	4	14	M12
112	160	110	10	130	3.5	M8	200	130	12	165	3.5	M10	215	180	250	4	14	M12
132	200	130	23	165	3.5	M10	250	180	12	215	4	M12	265	230	300	4	14	M12
160	250	180	20	215	4	M12	300	230	12	265	5	M16	300	250	350	5	15	M16

1) Clearance hole for screw 2) Available on request. Please refer to price list "PL 1.1" - Optional Features



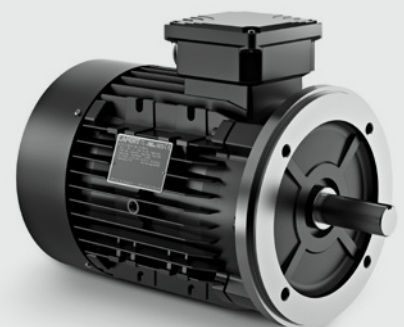
IEC	D	E	F h9	GD	GA	DB ¹⁾	EG	EB	ED
80	19 j6	40	6	6	21.5	M6	16	30	4
90	24 j6	50	8	7	27	M8	19	40	4
100	28 j6	60	8	7	31	M10	22	50	4
112	28 j6	60	8	7	31	M10	22	50	4
132	38 k6	80	10	8	41	M12	28	70	4
160	42 k6	110	12	8	45	M16	36	100	4

1) Centering holes in shaft extension to DIN 332 part 2

NEMA MOUNTING

IEC SIZE	NEMA SIZE	Type C Face (B14)
80	56	√
90	143/145	√
100	182/184	√
112	182/184	√
132	213/215	√
160	213/215	√

Foot mounting available with IEC shaft height and NEMA shaft and flange dimensions.



Lafert S.p.A.

Via J.F. Kennedy,43
30027 San Donà di Piave (Venice), Italy
Tel. +39 / 0421 229 611
lafert.info@shi-g.com

www.lafert.com

Branches & Partners**Lafert GmbH**

Wolf-Hirth-Straße 10
71034 Böblingen
Germany
Phone +49 175 550 4526
lge.info@shi-g.com

Lafert Electric Motors Ltd.

Unit 17 Orion Way
Crewe, Cheshire CW1 6NG
United Kingdom
Phone +44 / (0) 1270 270 022
luk.info@shi-g.com

Lafert Moteurs S.A.S.

L'Isle d'Abeau Parc de Chesnes
75, rue de Malacombe
38070 St. Quentin-Fallavier
France
Phone +33 / 474 95 41 01
lfr.info@shi-g.com

Lafert Motores Eléctricos, S.L.U.

Polígono Pignatelli, Nave 27
50410 Cuarte de Huerva (Zaragoza)
Spain
Phone +34 / 976 503 822
les.info@shi-g.com

Lafert N.A. (North America)

5620 Kennedy Road - Mississauga
Ontario L4Z 2A9
Canada
Phone +1 / 800/661 6413 - 905/629 1939
lna.info@shi-g.com

Lafert Electric Motors (Australia)

Factory 3, 117-123 Abbot Road,
Hallam - VIC 3803
Australia
Phone +61 / (0)3 95 46 75 15
info@lafertaust.com.au

Lafert Singapore Pte Ltd

48 Hillview Terrace #06-06
Hillview Building - Singapore 669269
Phone +65 / 67630400 - 67620400
info@lafert.com.sg

Lafert (Suzhou) Co., Ltd.

No.3 Industrial Plant Building Yue Xi Phase 3,
Tian E Dang Lu 2011, 215104 Wuzong
Economic Development Zone, Suzhou
China
Phone +86 / 512 6687 0618
lsu.info@shi-g.com